

# Locating and Accessing Mine Maps

Underground Mine Mapping  
Workshop

June 1<sup>st</sup> & 2<sup>nd</sup> 2005

Pittsburgh, PA

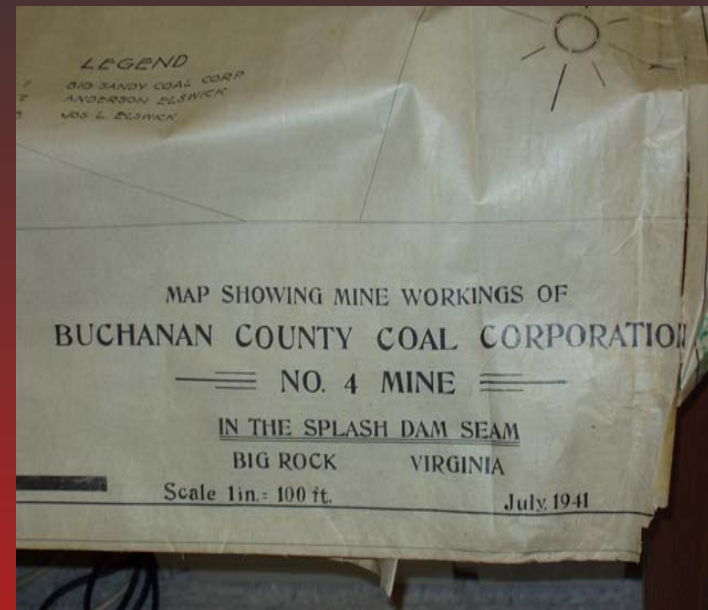
# Introduction

Virginia's map acquisition process:

- Finding the mine maps – physical location and ownership
- Hardcopy acquisition – off-site & on-site scanning

# Locating

- Actively pursue map collections
- Promote project
- Provide incentives

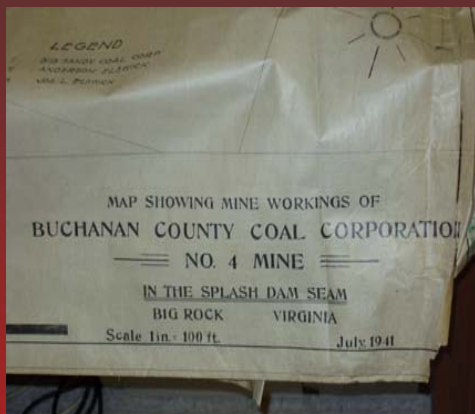


The archive is comprised of detailed underground mine maps from the mining industry, private collections, engineering firms, land offices, the Office of Surface Mining mine map repository, along with DMME existing mine map collections.

# Access to Maps

- Make it as painless as possible for lenders
- Clearly define terms of use
- Be flexible – time, location, deliverables

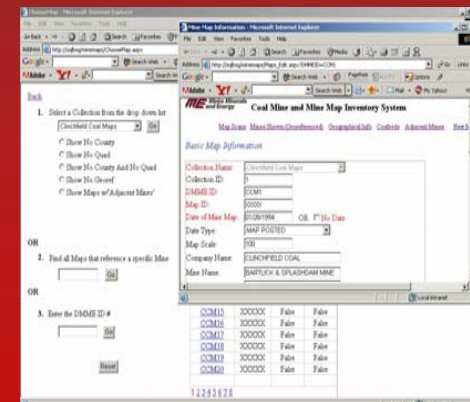
Virginia's Mine Map Archive contains over 40,000 mine map images that are cataloged by significant mine information, with massive information search capabilities.



*Collect*



*Scan*

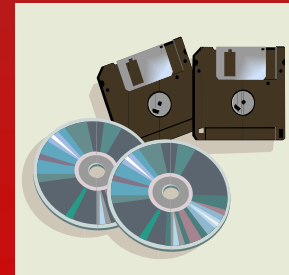


*Catalog*

# Deliverables

Map contributors have benefited by loaning DMME maps. Once the scanning and cataloging is complete, the maps are returned along with a digital archive, searchable spreadsheet and map inventory of their collection. The digital archive is delivered on DVD, CD, or digital download.

	A	B	C	D	E	F	G
	MAP. NO	DMR NO	DM NO.	FEDERAL ID NO.	MAP DATE	COAL SEAM	COMPANY NAME
2	RAP1000		XXXXX	XXXXX	7/1/1936		Rapoca Coal
3	RAP1001		XXXXX	XXXXX			Jewell & Vansant Coal Operations
4	RAP1002		XXXXX	XXXXX			Rapoca Coal Property Owners
5	RAP1003		XXXXX	XXXXX	9/30/1970	Pond Creek	Western Pocahontas
6	RAP1004		XXXXX	XXXXX			Rapoca
7	RAP1005		XXXXX	XXXXX			Rapoca
8	RAP1006		XXXXX	XXXXX			Rapoca
9	RAP1007		XXXXX	XXXXX			Rapoca
10	RAP1008		XXXXX	XXXXX			Rapoca
11	RAP1009		XXXXX	XXXXX			Rapoca
12	RAP1010		XXXXX	XXXXX	1/24/1981	Blair	Thompson Belcher
13	RAP1011		XXXXX	XXXXX	12/31/1976		United Coal
14	RAP1012		XXXXX	XXXXX			Bull Creek
15	RAP1013		XXXXX	XXXXX			
16	RAP1014		XXXXX	XXXXX	8/7/1972		James T. Justice Heirs
17	RAP1015		XXXXX	XXXXX			
18	RAP1016_1		XXXXX	XXXXX	10/1/1987	Hagy	Harman Mining
19	RAP1016_2		XXXXX	XXXXX	10/1/1987	Hagy	Harman Mining
20	RAP1017_1		XXXXX	XXXXX	10/1/1987	Eagle	Harman Mining
21	RAP1017_2		XXXXX	XXXXX	10/1/1987	Eagle	Harman Mining
22	RAP1018_1		XXXXX	XXXXX	10/1/1987	Blair	Harman Mining
23	RAP1018_2		XXXXX	XXXXX	10/1/1987	Blair	Harman Mining
24	RAP1019_1		XXXXX	XXXXX	10/1/1987	Glamorgan	Harman Mining
25	RAP1019_2		XXXXX	XXXXX	10/1/1987	Glamorgan	Harman Mining
26	RAP1020_1		XXXXX	XXXXX	2/1/1991		Pocahontas
27	RAP1020_2		XXXXX	XXXXX	2/1/1991		Pocahontas
28	RAP1020_3		XXXXX	XXXXX	2/1/1991		Pocahontas
29	RAP1021		XXXXX	XXXXX	4/4/2003		
30	RAP1022		XXXXX	XXXXX	12/31/1977		Island Creek Coal
31	RAP1023		05926	44-01520	9/30/1979	Pocahontas No 3	Island Creek Coal
32	RAP1024		XXXXX	XXXXX			
33	RAP1025		XXXXX	XXXXX	5/22/1980		
34	RAP1026		XXXXX	XXXXX			Elkhorn Coal
35	RAP1027		XXXXX	XXXXX	4/30/1970		National Shawmut Bank of Boston



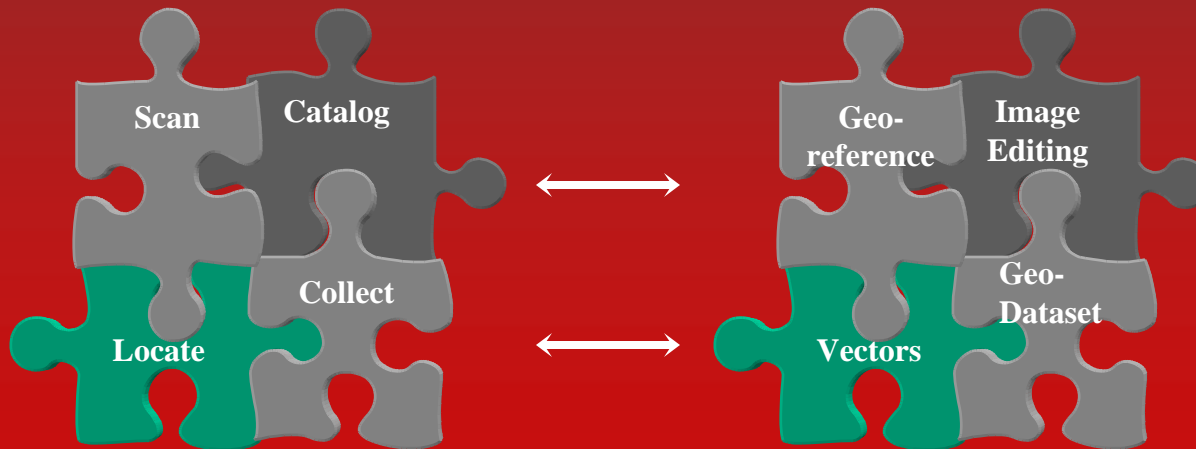


Images and catalog records are being added at the current rate of 10,000 maps per year. The number of maps projected for 2005 to 2006 is estimated to reach 11,000 maps or more as new collections are loaned.



# Overview

- Fitting it all together
- Phased approach



# Summary

- Locate maps
- Acquire maps
- Work on their time schedule
- Deliver a product
- Be proactive

# Where to Get More Information

- Contact:
  - Daniel Kestner
  - (276) 523-8193
  - Daniel.kestner@dmme.virginia.gov
- Press Release – Request for Assistance
  - <http://www.dmme.virginia.gov/DMMESeeksPre-1980UGMaps.htm>